



Consolidated

PIPE & SUPPLY COMPANY

Piling and Structural Division





Company Profile



CONSOLIDATED PIPE & SUPPLY COMPANY

is a privately held company based in Birmingham, Alabama with branch locations and sales offices located in 20 states.

Founded in 1960, CPS has provided materials and services to the energy, oil & gas, industrial, water, and sewer markets throughout the country.

The list below is an overview of the departments within our Company:

- Line Pipe / FBE Coatings
- Industrial Products
- Utility Products
- Structural Pipe
- Vulcan Plastics
- Consolidated Power Supply
- Consolidated Power Engineered Products
- Specialty Coatings
- Consolidated Controls
- Custom Fab Division
- Consolidated Fittings and Fabrication
- McElroy Rentals





Piling and Structural Pipe



**US ARMY CORPS OF ENGINEERS
BELL CHASSE, LOUISIANA**



**ARKANSAS HIGHWAY DEPARTMENT
WEST MEMPHIS, ARKANSAS**



**CONSOLIDATED PIPE AND SUPPLY STRUCTURAL PIPE YARD
BESSEMER, ALABAMA**

CONSOLIDATED'S PILING AND STRUCTURAL DIVISION offers a complete inventory of prime and structural carbon steel pipe.

Our Bessemer, Alabama yard consists of over 25,000 tons of predominantly ASTM-A252 and ASTM-500 grades of pipe 2-3/8" OD – 54" OD. We also maintain inventory in Houston, TX and New Orleans, LA.

Consolidated maintains a large position in domestic steel products to meet the "melted and manufactured" requirements of government projects such as The U.S. Army Corps of Engineers, The U.S. Navy, USDOT, and State DOT projects.

Mill Test Reports are provided as requested.

COMMON PILING AND STRUCTURAL APPLICATIONS:

- Foundation
- Bridge
- Micropile
- Marine
- Docks and Wharfs
- Utility Casings
- Bore Casings

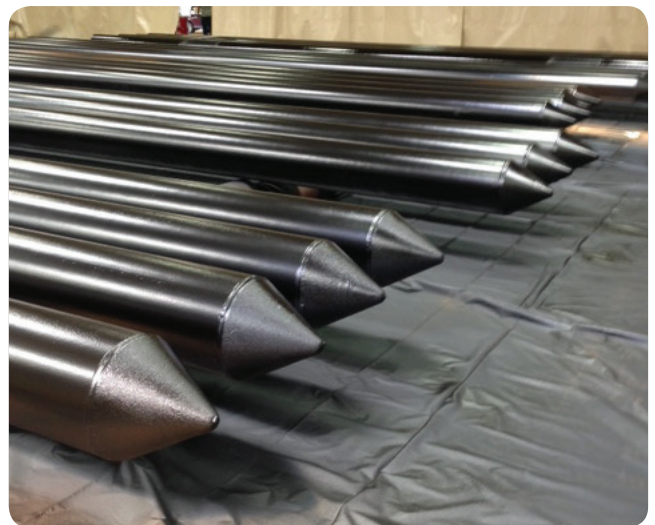
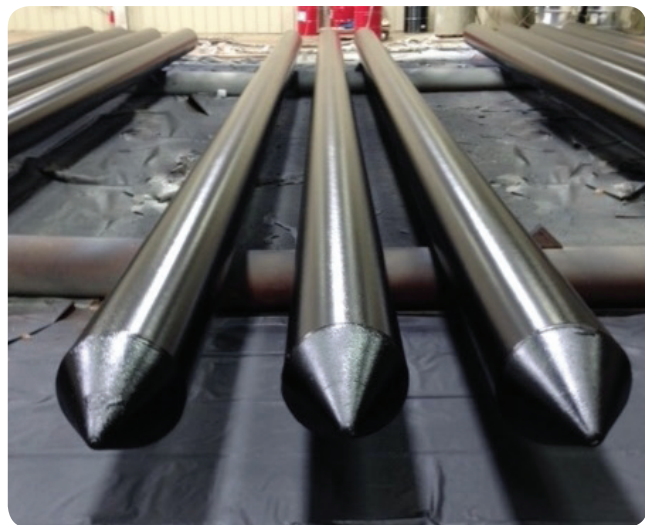


Fabrication

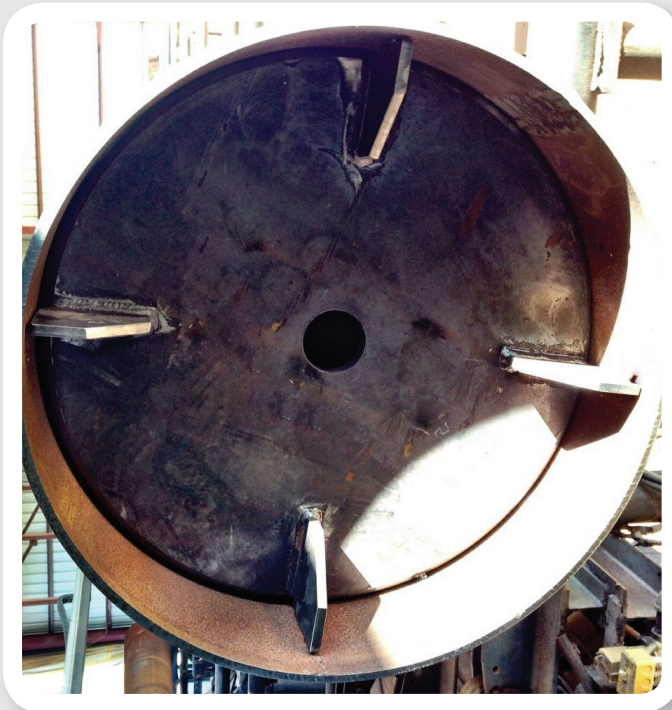
We offer various types of fabrication for all piling accessories as well as splicing, wheelabrating, beveling, grooving, and threading for any specific application.

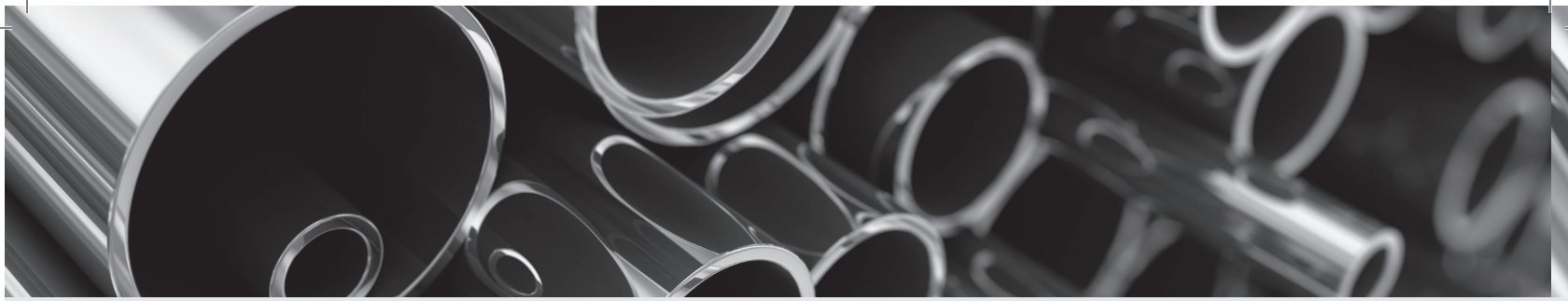
Our welders are certified and our procedures are performed to AWS D1.1 and AWS D1.5 specifications. Supplemental testing provided per request.

CONICAL POINTS



CONCRETE FILL STOPS





CONCRETE FILL STOP SPLICE INLINE



VIBRATORY DRIVE PLATES



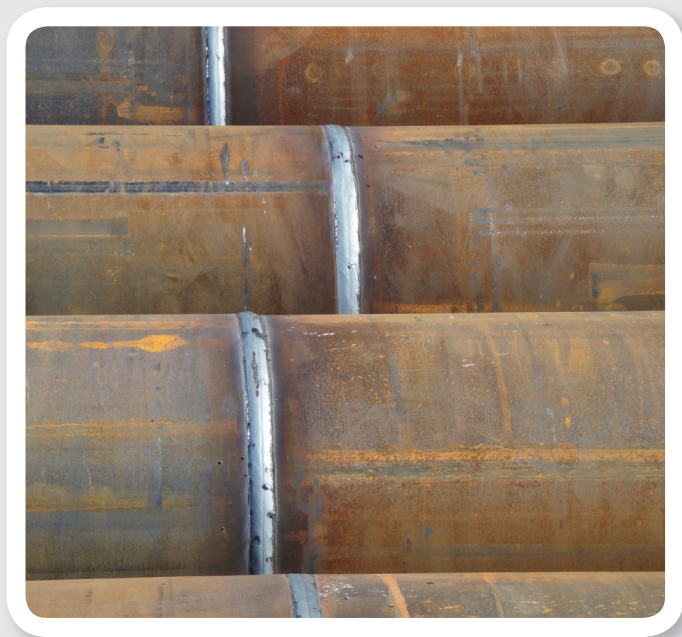


STEEL END PLATES





WELD SPLICES



CUTTING SHOES





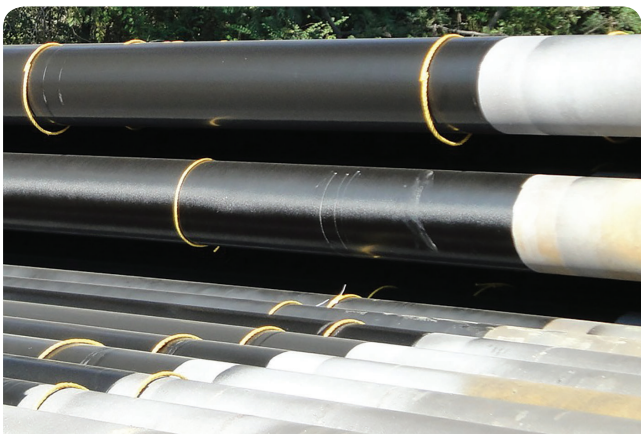
Specialty Coatings



Consolidated Specialty Coatings has the capability of internally and externally coating carbon steel and ductile iron pipe as well as any of the fittings needed for your project. We offer a wide variety of liquid applied coatings and linings. Size range capabilities include 2-1/2” through 72” for internal linings and 1/2” through 72” for external coatings.

Our capabilities include the following:

- ARO Coatings (Powercrete)
- Jet Fuel Applications
- External Paint Systems
- Potable Water (AWWA specified)
- Sewer Lining Applications



COAL TAR EPOXY COATING

Consolidated’s **New** Specialty Coatings location in Bessemer, Alabama is over 150,000 square feet of covered warehouse space and 30 acres of laydown yard, affording us the opportunity to manage large, release as required projects.

Our in-house coating capabilities allow for more efficient scheduling, faster deliveries, and lower costs to customers.

COATING TYPES

- Epoxies
- Polyurea AR170
- Alkyds
- Enamels
- Urethanes
- Coal Tar Epoxies
- Powercrete Epoxy
- Polymer Concrete

MANUFACTURERS

- 3M
- Ameron
- Carboline
- Sherwin Williams
- Indurall
- Tnemec
- Covalence

SPECIFICATIONS

- AWWA
- NSF
- DOT
- Military
- FDA
- QA/QC program



Coatings

In addition to our Specialty Coatings facility we offer coatings such as zinc galvanized



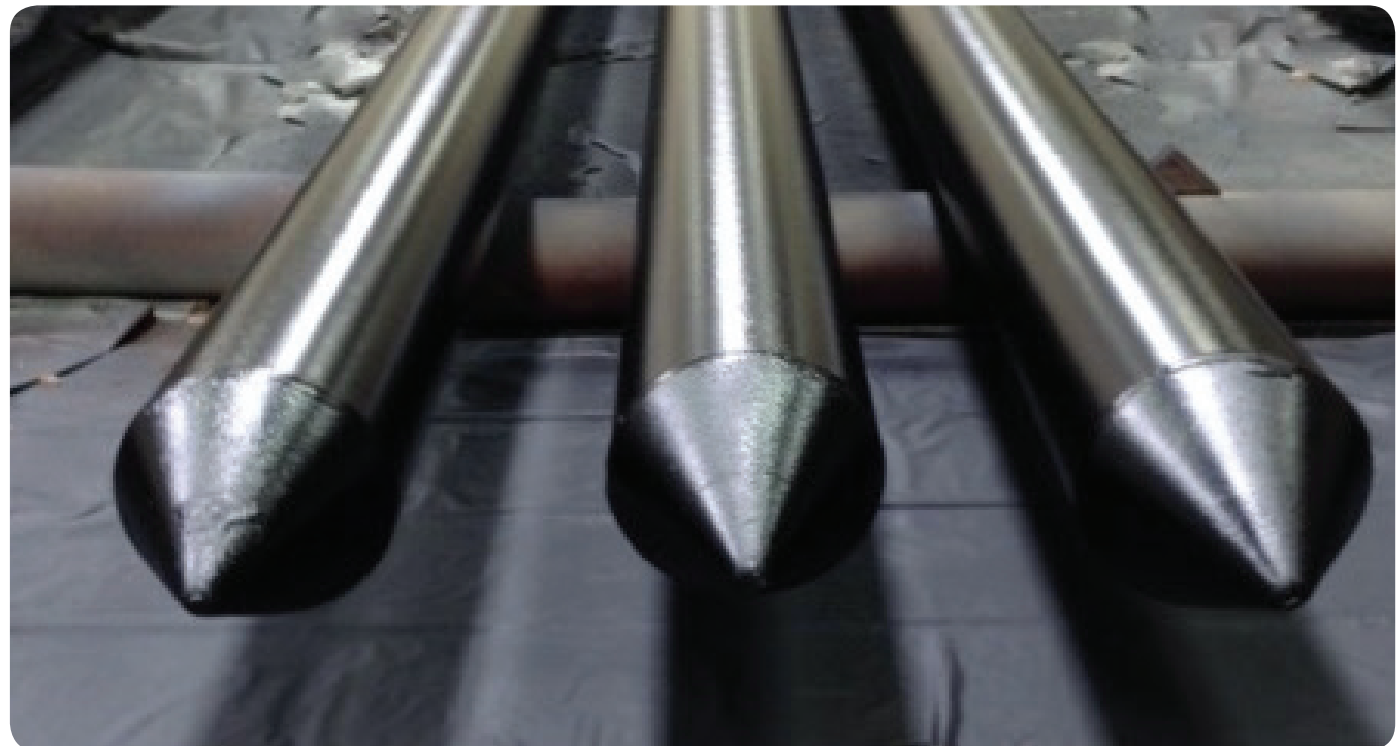


Dedicated to Service

Our project turnaround is second to none in the industry. On time deliveries and customer satisfaction are proof of that. We utilize our vast inventory, in house fabrication, and coating facilities to expedite your fast track projects.



- PROFESSIONAL STAFF
- FAST, DEPENDABLE SERVICE
- EXTENSIVE INVENTORY
- CUT OR SPLICED TO LENGTH
- ON TIME DELIVERIES BY TRUCK, RAIL, OR BARGE
- PROVEN RELIABILITY
- QUALITY : DONE RIGHT THE FIRST TIME







Consolidated

PIPE & SUPPLY COMPANY

www.consolidatedpipe.com

P.O. BOX 2472
BIRMINGHAM, AL 35201

PHONE: 205-323-7261
1-800-467-7261
FAX: 205-251-7838